

Small to Midsize Businesses

Reliable Server Management for SMBs

Available models

- ▶ DLX-108: 1 remote, 1 local user, up to 8 servers
- ▶ DLX-116: 1 remote, 1 local user, up to 16 servers
- ▶ DLX-216: 2 remote, 1 local user, up to 16 servers

Features

- ▶ BIOS-level access and control
- ▶ Universal Virtual Media™*
- ▶ Absolute Mouse Synchronization™*
- ▶ Local and remote access
- ▶ Common browser-based user interface
- ▶ VGA, DVI, HDMI and DisplayPort video
- ▶ Security and encryption features
- ▶ RADIUS, LDAP and Active Directory® administration
- ▶ Multi-language support
- ▶ Modern architecture platforms with high definition (HD) 1920x1080 remote video resolution
- ▶ Flexible tiering for management of up to 256 computers from a single console
- ▶ Multiplatform support: Windows®, Macintosh®, Linux®, Sun®/Solaris™
- ▶ Flexible CIM options

*D2CIM-VUSB or D2CIM-DVUSB required

Please visit www.raritan.com/LX to learn more



Affordable, high-quality, KVM-over-IP for the evolving small or midsize business

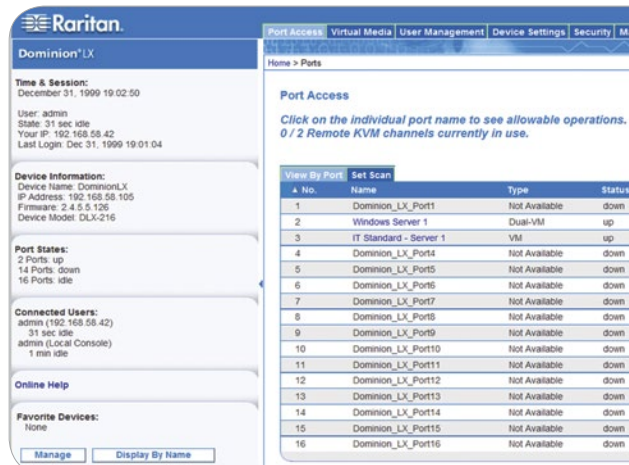
Get more, pay less!

Raritan's Dominion LX KVM-over-IP switches give one or two remote users, with an independent local port, BIOS-level access and control of 8 or 16 servers. With flexible tiering (cascading) users can manage up to 256 computers from a single console.

These appliances, specifically designed for small to midsize businesses (SMBs), offer economical, remote access from anywhere; efficient, reliable server management; and an affordable feature set.

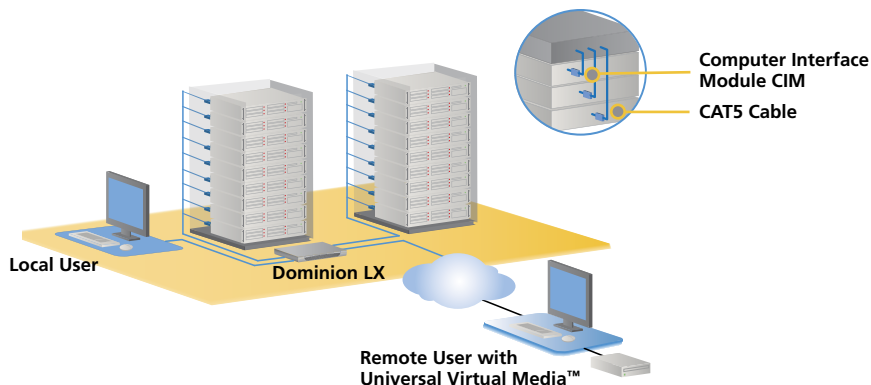
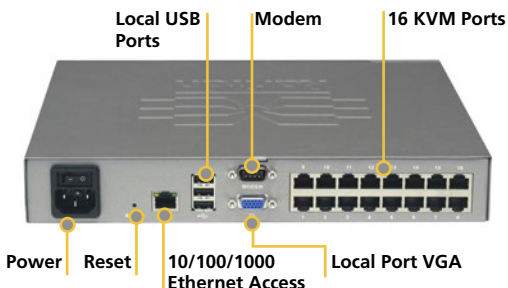
Dominion LX benefits include:

- ▶ Efficient, reliable server management
- ▶ Economical, secure remote access from anywhere
- ▶ Economical footprint
- ▶ Efficient server diagnostics and restore capabilities
- ▶ Reduced travel time and training costs
- ▶ Single switch to support VGA, DVI, HDMI and DisplayPort server video
- ▶ Cable package options for a minimum initial investment

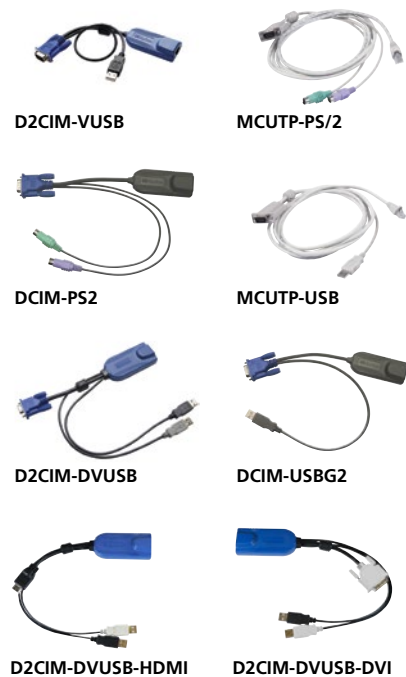


Specifications

DLX-216 shown



| Dominion LX Model | Description | Product Dimension (WxDxH), Shipping Weight and Power | Environment | Cable Packages |
|--|--|---|---|--|
| DLX-108 | Economical 8-port KVM-over-IP switch, 1 remote, 1 local user, virtual media, single power and single LAN | 11.45" x 10.63" x 1.73"; 291 mm x 270 mm x 44 mm; | Operating Temperature: 0° – 40° C (32° – 104° F) Humidity: 20% – 85% RH | DLX-108-MPAC: One DLX108 with 8 MCUTP20 6.5 foot cables DLX-116-MPAC: One DLX116 with 16 MCUTP20 6.5 foot cables DLX-216-MPAC: One DLX216 with 16 MCUTP20 6.5 foot cables D2CIM-VUSB, D2CIM-DVUSB or D2CIM-DVUSB-xxx required for Absolute Mouse Synchronization and Universal Virtual Media. |
| DLX-116 | Economical 16-port KVM-over-IP switch, 1 remote, 1 local user, virtual media, single power and single LAN | 8.82 lbs ; 4.0 kg | | |
| DLX-216 | Economical 16-port KVM-over-IP switch, 2 remote, 1 local user, virtual media, single power and single LAN | Single power 100-240V AC, 50-60 Hz, 0.5A, 30 watts, 25.794 kcal/h | | |
| Hardware Supported | | | | |
| Form Factor | 1U, rack mountable (brackets included) | | | |
| Local Access Ports | Video: HD15(F) VGA; Keyboard/Mouse: USB(F); 3 USB rear | | | |
| Sample Video Resolutions | PC text mode: 640x350, 640x480, 720x400 PC graphic mode: 640x480, 800x600, 1024x768, 1152x864, 1280x1024, 1440x900, 1680x1050, 1600x1200, 1920x1080 Sun video mode: 1024x768, 1152x864, 1152x900, 1280x1024 | | | |
| Remote Connection | | | | |
| Ports | 8 (DLX-108) or 16 (DLX-116, DLX-216) | | | |
| Users | Local user; 1 or 2 remote users (model dependent) | | | |
| Network | Single 10/100/1000 gigabit Ethernet access, dual-stack: IPv4 and IPv6 | | | |
| Protocols | TCP/IP; HTTP; HTTPS; UDP; RADIUS; SNMP; DHCP; PAP; CHAP | | | |
| Computer Interface Modules (CIMs) and Cat5 Cables | | | | |
| Dominion CIMs | Available for VGA, DVI, HDMI, DisplayPort, Dual USB,v USB, Dual USB, Universal Virtual Media/Absolute Mouse Synchronization, PS2, Sun, Serial Devices Dimensions (WxDxH) = 1.7" x 3.5" x 0.8"; 43 mm x 90 mm x 19 mm (dual USB) and 1.3" x 3.0" x 0.6"; 33 mm x 76 mm x 15 mm (other DCIMs) | | | |
| Cat5 MCUTP Cables | KVM UTP cable for PS/2, USB, Sun – lengths from 0.6m (2 ft.) – 6m (20 ft.). Specifications: RJ45 <-> HDB-15M, mini-din 6 x 2 (PS/2), USB type A (USB/Sun) | | | |
| Service and Support | | | | |
| Warranty* | Two years standard with advanced replacement | | | |



© 2015 Raritan Inc. All rights reserved. Raritan®, Know more. Manage smarter™, Dominion®, Universal Virtual Media™ and Absolute Mouse Synchronization™ are registered trademarks or trademarks of Raritan Inc. or its wholly-owned subsidiaries. All others are registered trademarks or trademarks of their respective owners.

Based in Somerset, NJ, Raritan has 38 offices worldwide, serving 76 countries. For more information, please visit www.raritan.com

*To qualify for advanced replacement under the standard warranty, you must register the product at <http://www.raritan.com/support/product-warranty-registration>
Specifications are subject to change without notice.