



GS2220 Series

10/28/50-port GbE L2+ Managed Switch with GbE Uplink

Zyxel's new generation of Layer 2+ Switch GS2220 Series are fully featured Layer 2 Gigabit access switches designed to meet converged data, video and voice networking needs. This latest series' eye-catching new look comes in 10-, 28-, and 50-port models with a combination of PoE and non-PoE. On top of the fully manageable L2 features set comes with the state-of-art Zyxel NebulaFlex Pro technology for cloud manageability.

Benefits

Agile traffic control for converged networking applications

The GS2220 Series has a rich Layer 2 feature set that can shape the traffic for diverse VoIP, video conference and IPTV deployments. Advanced traffic control features of the GS2220 Series such as L2 multicast, IGMP snooping, Multicast VLAN Registration (MVR) provide hotels, businesses, and educational institutions greater agility and more effective traffic management for the converged applications of today.

Dedicated networked AV mode

The standard switch interface includes an abundance of generic networking features to address wide variety of applications, making it a challenge for traditional AV system integrators to setup an IP-based network that needs to run Audio and Video services. The tailor-made networked AV mode begins with an intuitive wizard that prompts for high level requirement for network infrastructure, follow up with AI-intelligent to apply all the necessary details to setup a professional AVoIP system. With the intuitive graphical status overview of the key AV network elements such as IGMP and IP information, accompany with condensed function menu help you manage and monitor the system with ease.



NebulaFlex Pro allows users to switch between standalone management and intuitive Nebula cloud managed mode with 1-Year Pro Pack bundled



Tailor-made Networked AV mode brings efficiency to professional AVoIP networking setups and monitoring services



L2 multicast, IGMP snooping, MVR and voice VLAN for convergence



High power budget of 375W (28HP/52HP) and 180W (10HP) within its compact case design simplifying rack installation



Smart fan and fanless designs offer near silent operations in both desktop and rack-mount environment



Check real-time status intuitively by cloud and PoE LED indicators



Zyxel one network
Redefining network integration

Experience whisper-silent operations

The GS2220 Series includes fanless and built-in smart fan models. The smart fan is designed to automatically adjust speeds based on the device temperature, offering near silence while the GS2220 Series is in operation. Ideal for your office environment no matter if it's on the desktop or mounted on a rack.

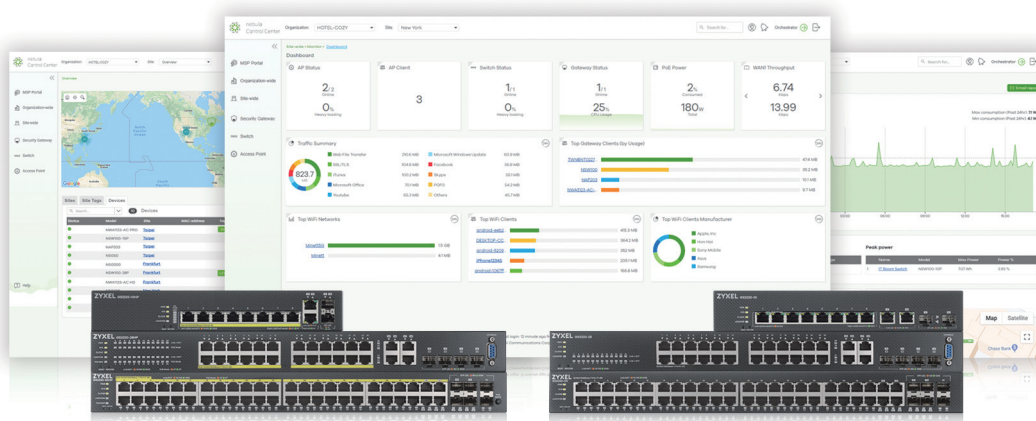
Power your devices with efficiency and energy-saving

The GS2220 Series PoE switches support 802.3at PoE Plus standards to offer 30-watt per port along with maximum 375-watt high-power budget to meet the needs from power-hungry devices. The intelligent consumption mode allows delivery of only the actual power required by devices connected to the switch for better business ROI. The PoE scheduling feature supplies power to devices only during working hours, saving energy and money while preventing improper use of business network resources. The user-friendly PoE consumption indicator located on the front panel and Web GUI provides real-time power utilization.

NebulaFlex Pro – simply manage it your way!

The NebulaFlex Pro provides extended flexibility, especially for those who hesitate to step up for cloud networking. You can switch easily between Cloud Managed with a 1-Year Pro Pack License Bundled or Standalone Management. The NebulaFlex Pro even allows you to change your mind at any time without additional cost while protecting previous investments on wired technology. You can have the privilege to use advanced features with professional pack for one year upon registration on Nebula; these features include advanced IGMP technology, comprehensive IPTV reports that provide insights to channel usage information, network analytics alert to optimize network performance along with more upcoming new features on NCC and its App.

* Please refer to the following feature sets for the detail cloud support features.



Model List

GS2220-10

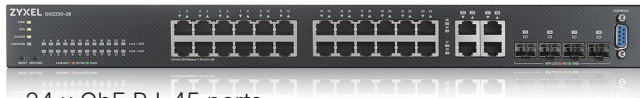
8-port GbE L2+ Managed Switch with 2 GbE Uplink



- 8 x GbE RJ-45 ports
- 2 x GbE combo ports

GS2220-28

24-port GbE L2+ Managed Switch with 4 GbE Uplink



- 24 x GbE RJ-45 ports
- 4 x GbE combo ports

GS2220-50

44-port GbE L2+ Managed Switch with 6 GbE Uplink



- 44 x GbE RJ-45 ports
- 4 x GbE combo ports
- 2 x GbE SFP slots

GS2220-10HP

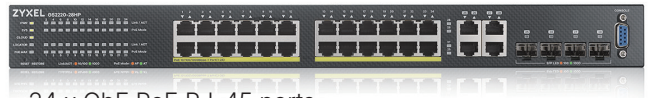
8-port GbE PoE L2+ Managed Switch with 2 GbE Uplink



- 8 x GbE PoE RJ-45 ports
- 2 x GbE combo ports
- PoE power budget: 180W

GS2220-28HP

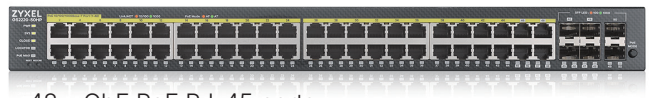
24-port GbE PoE L2+ Managed Switch with 4 GbE Uplink



- 24 x GbE PoE RJ-45 ports
- 4 x GbE combo ports
- PoE power budget: 375W

GS2220-50HP

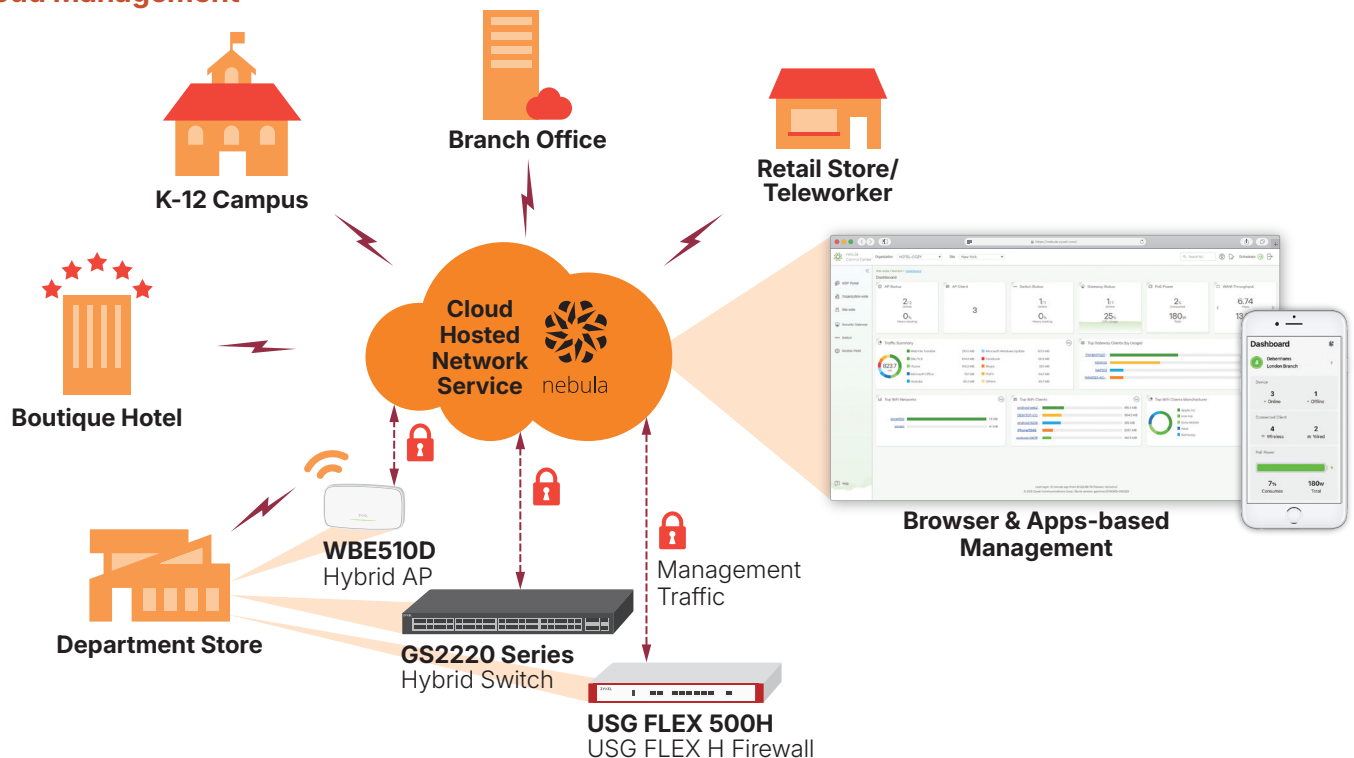
44-port GbE PoE L2+ Managed Switch with 6 GbE Uplink



- 48 x GbE PoE RJ-45 ports
- 4 x GbE combo ports
- 2 x GbE SFP slots
- PoE power budget: 375W

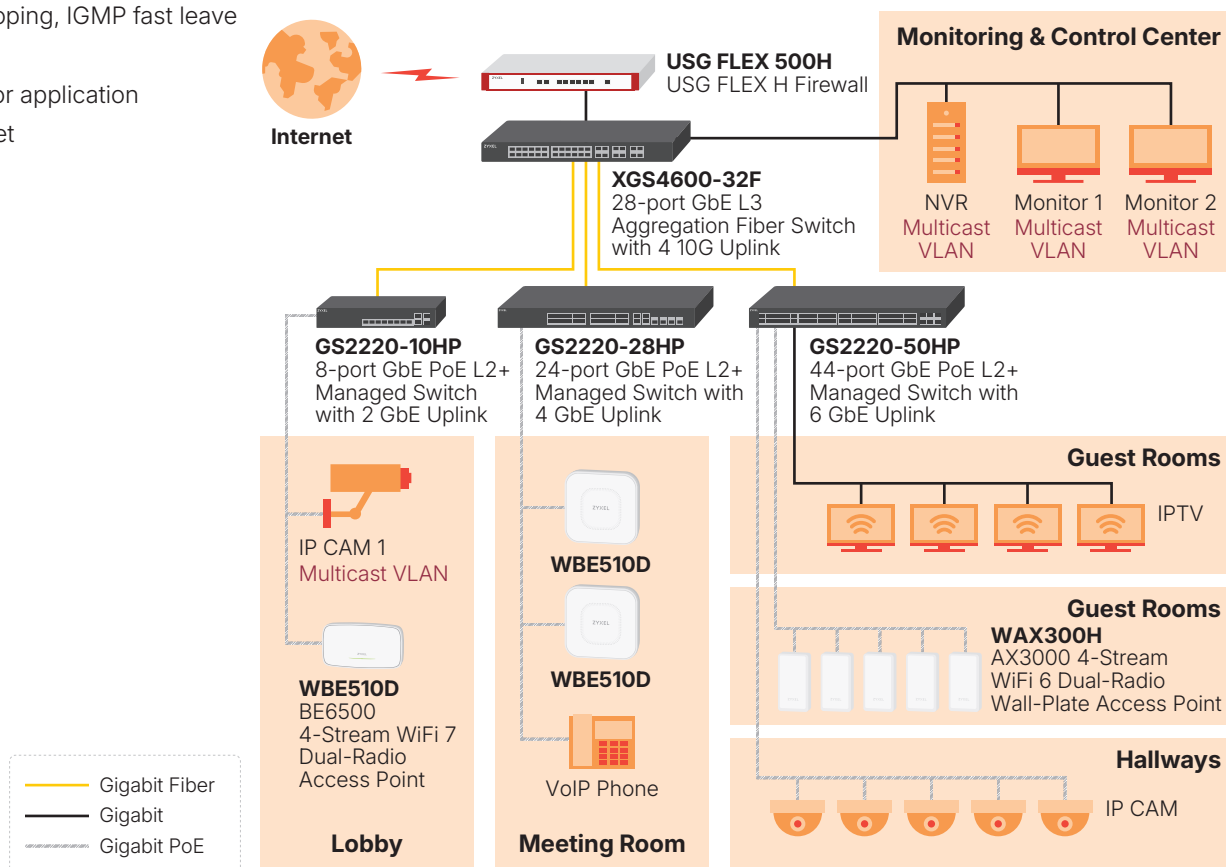
Application Diagram

Cloud Management



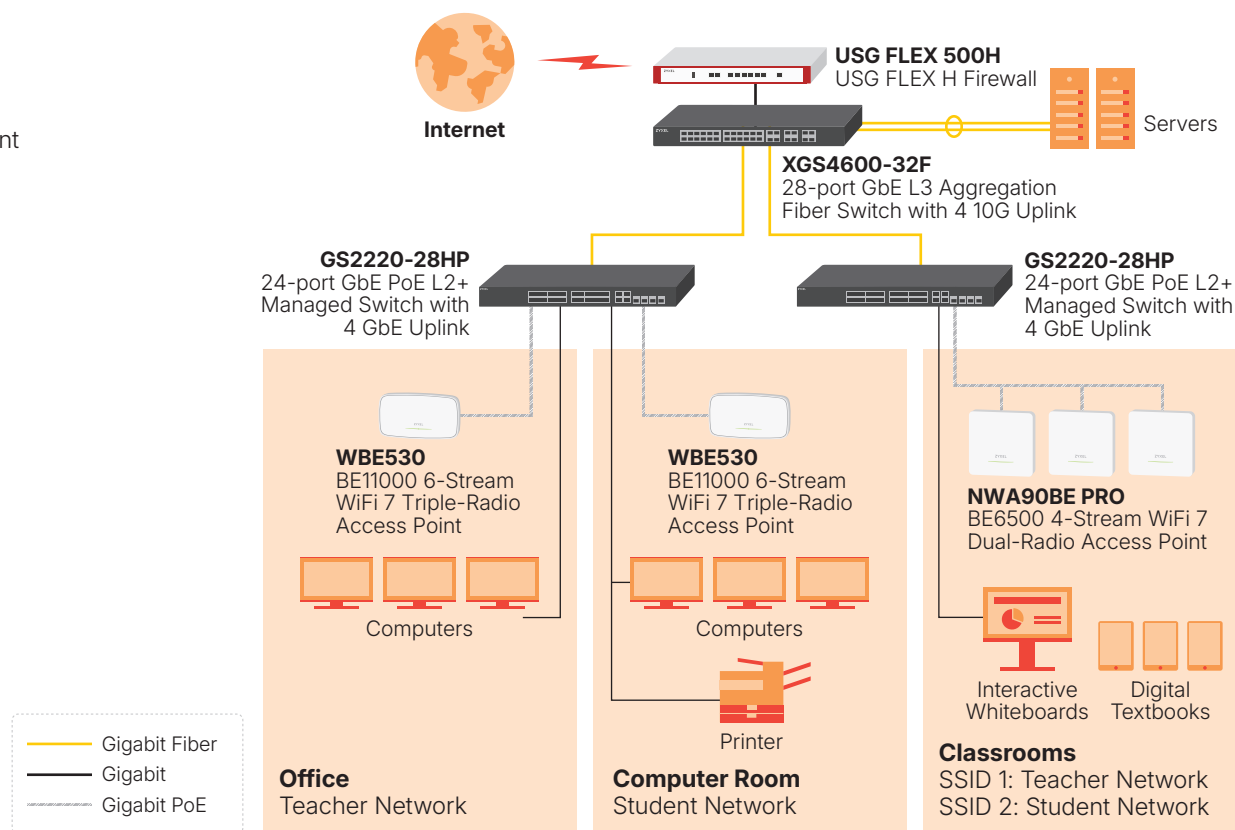
Standalone Management: For Hospitality

- MVR, IGMP snooping, IGMP fast leave
- Port isolation
- QoS by port, IP or application
- High PWR budget
- 802.3at support



Standalone Management: For Education

- Loop guard
- CPU protection
- IP source guard
- IPv6 Management



Specifications

Model		GS2220-10	GS2220-10HP	GS2220-28	GS2220-28HP	GS2220-50	GS2220-50HP
Product name		8-port GbE L2+ Managed Switch with 2 GbE Uplink	8-port GbE PoE L2+ Managed Switch with 2 GbE Uplink	24-port GbE L2+ Managed Switch with 4 GbE Uplink	24-port GbE PoE L2+ Managed Switch with 4 GbE Uplink	44-port GbE L2+ Managed Switch with 6 GbE Uplink	44-port GbE PoE L2+ Managed Switch with 6 GbE Uplink
Switch class		Layer 2+	Layer 2+	Layer 2+	Layer 2+	Layer 2+	Layer 2+
Port Density							
Total port count		10	10	28	28	50	50
10M/100M/1G (RJ-45)		8	8	24	24	44	44
Gigabit Combo (RJ-45/SFP)		2	2	4	4	4	4
Gigabit SFP		-	-	-	-	2	2
PoE							
802.3at PoE ports		-	8	-	24	-	48
Total PoE budget (watts)		-	180	-	375	-	375
Performance							
Switching capacity (Gbps)		20	20	56	56	100	100
Forwarding rate (Mpps)		15	15	42	42	74	74
Packet buffer (byte)		1.5M	1.5M	1.5M	1.5M	1.5M	1.5M
MAC address table		16K	16K	16K	16K	16K	16K
Jumbo frame (byte)		9K	9K	9K	9K	9K	9K
Flash/RAM (MB)		32/256	32/256	32/256	32/256	32/256	32/256
Power							
Input		100 to 240V AC, 50/60Hz	100 to 240V AC, 50/60Hz	100 to 240V AC, 50/60Hz	100 to 240V AC, 50/60Hz	100 to 240V AC, 50/60Hz	100 to 240V AC, 50/60Hz
Min. power consumption (watts) Without any port connection		8.42	12.61	15.72	25.99	20.97	32.33
Max. power consumption (watts) All ports full load without PoE		11	17.25	22.5	36.608	36.9	53.674
Max. power consumption (watts) All ports full load with PoE		-	210.8	-	463.5	-	474.3
Physical Specifications							
Item	Dimensions (WxDxH) (mm/in.)	267 x 162 x 44/ 10.51 x 6.38 x 1.73	267 x 162 x 44/ 10.51 x 6.38 x 1.73	441 x 131 x 44/ 17.36 x 5.16 x 1.73	441 x 270 x 44/ 17.36 x 10.63 x 1.73	440 x 200 x 44.5/ 17.32 x 7.87 x 1.75	441 x 270 x 44/ 17.36 x 10.63 x 1.73
	Weight (kg/lb.)	1.3/2.87	1.8/3.97	2.2/4.85	3.8/8.38	2.9/6.39	4.1/9.04
Packing	Dimensions (WxDxH) (mm/in.)	375 x 235 x 61/ 14.76 x 9.25 x 2.4	375 x 235 x 61/ 14.76 x 9.25 x 2.4	558 x 214 x 79/ 21.97 x 8.43 x 3.11	616 x 355 x 107/ 24.25 x 13.98 x 4.21	496 x 289 x 90/ 19.53 x 11.38 x 3.54	616 x 355 x 107/ 24.25 x 13.98 x 4.21
	Weight (kg/lb.)	2.21/4.87	2.7/5.95	2.91/6.42	4.97/10.96	3.97/8.75	5.25/11.57
Included accessories		• Power cord • Wall-mount kit • Rack mounting kit	• Power cord • Wall-mount kit • Rack mounting kit	• Power cord • Rack mounting kit	• Power cord • Rack mounting kit	• Power cord • Rack mounting kit	• Power cord • Rack mounting kit
Green Features							
Fanless		Yes	-	Yes	-	-	-
Environmental Specifications							
Operating	Temperature	0°C to 50°C/32°F to 122°F					
	Humidity	10% to 95% (non-condensing)					
Storage	Temperature	-40°C to 70°C/-40°F to 158°F					
	Humidity	10% to 95% (non-condensing)					
MTBF (hr)		1,213,492	587,477	989,157	693,245	660,245	466,921
Heat dissipation (BTU/hr)		37.51	718.828	76.725	1,580.535	125.829	1,617.363
Acoustic noise (min/max, dBA)		0	18/41	0	27.2/49.8	23.6/47.3	26.5/49.5

Features

Standard Compliance

- IEEE 802.3u 100BASE-TX Ethernet*
- IEEE 802.3ab 1000BASE-T Ethernet*
- IEEE 802.3z 1000BASE-X*
- IEEE 802.3af PoE*
- IEEE 802.3at PoE plus*
- IEEE 802.3az EEE
- IEEE 802.3x flow control* (support on Nebula Cloud mode from ZyNOS 5.00)
- IEEE 802.1AB LLDP/LLDP-MED*
- IEEE 802.3ad LACP aggregation*
- IEEE 802.1D Spanning Tree Protocol (STP)*
- IEEE 802.1w Rapid Spanning Tree Protocol (RSTP)*
- IEEE 802.1s Multiple Spanning Tree Protocol (MSTP)
- IEEE 802.1Q VLAN tagging
- IEEE 802.1p Class of Service (CoS) prioritization*
- IEEE 802.1X port authentication*

Resilience and Availability

- IEEE 802.1D Spanning Tree Protocol (STP)*
- IEEE 802.1w Rapid Spanning Tree Protocol (RSTP)*
- IEEE 802.1s Multiple Spanning Tree Protocol (MSTP)
- IEEE 802.3ad LACP*
- Loop guard*
- Root guard*
- BPDU guard*
- ErrDisable recovery
- MRSTP (Zyxel Proprietary)
- Dual configuration files
- Dual images*
- Flex link

Traffic Control

- 802.1Q static VLANs*/dynamic VLANs: 1K/4K
- Port-based VLAN
- Protocol-based VLAN
- IP subnet-based VLAN
- MAC-based VLAN
- Private VLAN
- Voice VLAN*
- Vendor ID based VLAN*
- VLAN ingress filtering*
- LACP algorithm of source/destination IP or MAC*
- GVRP
- L2PT

Security

- Port security*
- Layer 2 MAC filtering*
- Layer 3 IP filtering
- Layer 4 TCP/UDP socket filtering
- Static MAC forwarding
- Multiple RADIUS servers (IPv4*/IPv6)
- Multiple TACACS+ servers
- Compound authentication
- 802.1x VLAN* and 802.1p assignment by RADIUS
- Login authentication by RADIUS
- Login authentication by TACACS+
- TACACS+ accounting
- RADIUS accounting
- Authorization on RADIUS
- Authorization on TACACS+
- SSH v2*
- SSL
- MAC freeze
- DHCP snooping IPv4
- DHCP snooping IPv6
- ARP inspection
- Static IP-MAC-Port binding
- Policy-based security filtering
- Port isolation*
- IP source guard (IPv4*/IPv6)
- MAC search*
- Guest VLAN*
- ACL packet filtering* (IPv4)
- CPU protection
- Interface related trap enable/disable (by port)
- MAC-based authentication per VLAN
- **New for ZyNOS 5.00** Password encryption
- **New for ZyNOS 5.00** Password complexity
- **New for ZyNOS 5.00** Brute-force attack protection
- **New for ZyNOS 5.00** SSH public key authentication

Quality of Service (QoS)

- No. of hardware queues per port: 8*
- Storm control and event log: Broadcast, multicast, unknown unicast (DLF)*
- Port-based rate limiting* (ingress/egress)
- Rate limiting per IP/TCP/UDP per port
- Policy-based rate limiting
- 802.1p Class of Service (SPQ, WFQ, WRR, hybrid-SPQ combination capable)
- DiffServ (DSCP)

Layer 2 Multicast

- L2 multicast*
- IGMP snooping (v1, v2, v3)*
- IGMP snooping fast leave*
- Configurable IGMP snooping timer and priority*
- IGMP snooping statistics*
- IGMP throttling*
- MVR support
- IGMP filtering*
- IGMP snooping immediate leave*
- IGMP proxy mode & snooping mode selection*
- MLD snooping

Manageability

- SNMP* v1, v2c, v3
- SNMP trap group
- RMON (1, 2, 3, 9)
- ICMP echo/echo reply
- Syslog*
- IEEE 802.1AB LLDP*
- IEEE 802.1AB LLDP-MED*
- Custom default
- Display port utilization*
- Support NebulaFlex Pro for Cloud Management
- DHCP relay per VLAN
- DHCP server guard
- DHCP smart relay
- **New for ZyNOS 5.00** DHCP relay option 82*
- **New for ZyNOS 5.00** SSH Remote Command Execution

IPv6 Management

- IPv6 over Ethernet (RFC 2464)
- IPv6 addressing architecture (RFC 4291)
- Dual stack (RFC 4213)
- ICMPv6 (RFC 4443)
- Path MTU (RFC 1981)
- Minimum path MTU size of 1280 (RFC 5095)
- Encapsulation for maximum PMTU of 1500
- Neighbor discovery (RFC 4861)
- DHCPv6 relay
- Default DHCP client mode*

Device Management

- Cloud management by Nebula Control Center*
- Networked AV mode by Web Interface
- Zyxel iStacking™
- **New for ZyNOS 5.00** Optimized Dante and AES67 in Networked AV mode

- Web interface
- Management through Web interface, Console, Telnet, SNMP
- Remote firmware upgrade by FTP/ Web/TFTP
- Configuration saving and retrieving*
- Multiple logins supported
- Configure clone*
- Multilevel CLI*
- CLI (Cisco-like)
- DHCP client IPv4*
- DHCP client IPv6
- DHCP option 82
- Daylight saving*
- DHCP relay MAC proxy
- DHCP server guard
- NTP supports IPv4/IPv6
- Port mirroring*
- RS-232 out-of-band console port
- Scheduled PoE*
- PoE default consumption mode*
- Restore to last custom default
- Auto PD Recovery*
- Auto configuration recovery (only for cloud mode)
- New Web interface
- **New for ZyNOS 5.00** SSH Remote Command Execution

MIB

- Zyxel Common MIB
- **New for ZyNOS 5.00** Zyxel Private MIB
- RFC 1066 TCP/IP-based MIB
- RFC 1213, 1157 SNMPv2c/v3 MIB

- RFC 1493 bridge MIB
- RFC 1643 Ethernet MIB
- RFC 1757 RMON group 1, 2, 3, 9
- RFC 2011, 2012, 2013 SNMPv2 MIB
- RFC 2233 SMIv2 MIB
- RFC 2358 Ethernet-like MIB
- RFC 2674 bridge MIB extension
- RFC 2819, 2925 remote management MIB
- RFC 3621 power Ethernet MIB
- RFC 4022 management information base for transmission control protocol
- RFC 4113 management information base for user datagram protocol
- RFC 4292 IP forwarding table MIB
- RFC 4293 Management Information Base (MIB) for IP
- Cable diagnostic MIB

Certifications

Safety

- LVD
- BSMI

EMC

- FCC Part 15 (Class A)
- CE (Class A)
- BSMI EMC

RoHS

- Level A

Zyxel One Network

ZON Utility*

- Discovery of Zyxel switches, APs and gateways

- Centralized and batch configurations
 - IP configuration
 - IP renew
 - Device factory reset
 - Device reboot
 - Device locating
 - Web GUI access
 - Password configuration
 - One-click quick association with Zyxel AP Configurator (ZAC)
- Automatic detection of the latest firmware
- Displays device serial number and hardware version
- Cloud mode on/off option for Hybrid series devices
- Intuitive Cloud connection status

Smart Connect

- Discover neighboring devices
- One-click remote management access to the neighboring Zyxel devices
- Reset neighboring devices remotely to factory defaults
- Power cycle neighboring powered devices (PoE switches only)

Warranty

- Limited life-time warranty**

* Nebula Cloud and Standalone modes supported features. Some Nebula features may need an extra license to work. For more details on the features and licenses, check [Nebula Licensing Table](#).

** Warranty terms, service availability, and service response times may vary from country or region to country or region

Accessories

Transceivers (Optional)

Model	Speed	Connector	Wavelength	Max. Distance	DDMI
SFP-1000T	Gigabit	RJ-45	-	0.1km (109yd)	-
SFP-SX-D	Gigabit	Duplex LC	850nm	0.55km (601yd)	Yes
SFP-SX-E	Gigabit	Duplex LC	850nm	0.55km (601yd)	Yes
SFP-LX-10-D	Gigabit	Duplex LC	1310nm	10km (10936yd)	Yes
SFP-LX-10-E	Gigabit	Duplex LC	1310nm	10km (10936yd)	Yes
SFP-LHX1310-40-D	Gigabit	Duplex LC	1310nm	40km (43744yd)	Yes
SFP-ZX-80-D	Gigabit	Duplex LC	1550nm	80km (87488yd)	Yes
SFP-BX1310-10-D	Gigabit	Single LC	1310nm (Tx); 1490nm (Rx)	10km (10936yd)	Yes
SFP-BX1310-E	Gigabit	Single LC	1310nm (Tx); 1550nm (Rx)	20km (21872yd)	Yes
SFP-BX1490-10-D	Gigabit	Single LC	1490nm (Tx); 1310nm (Rx)	10km (10936yd)	Yes
SFP-BX1550-E	Gigabit	Single LC	1550nm (Tx); 1310nm (Rx)	20km (21872yd)	Yes

For more product information, visit us on the web at www.zyxel.com

Copyright © 2025 Zyxel and/or its affiliates. All rights reserved.
All specifications are subject to change without notice.

